



TWO BEDROOM SUITE

Two Bedroom Suite

STEVESTON
WATERFRONT HOTEL

TOTAL AREA

595 SQ FT



Feature List:

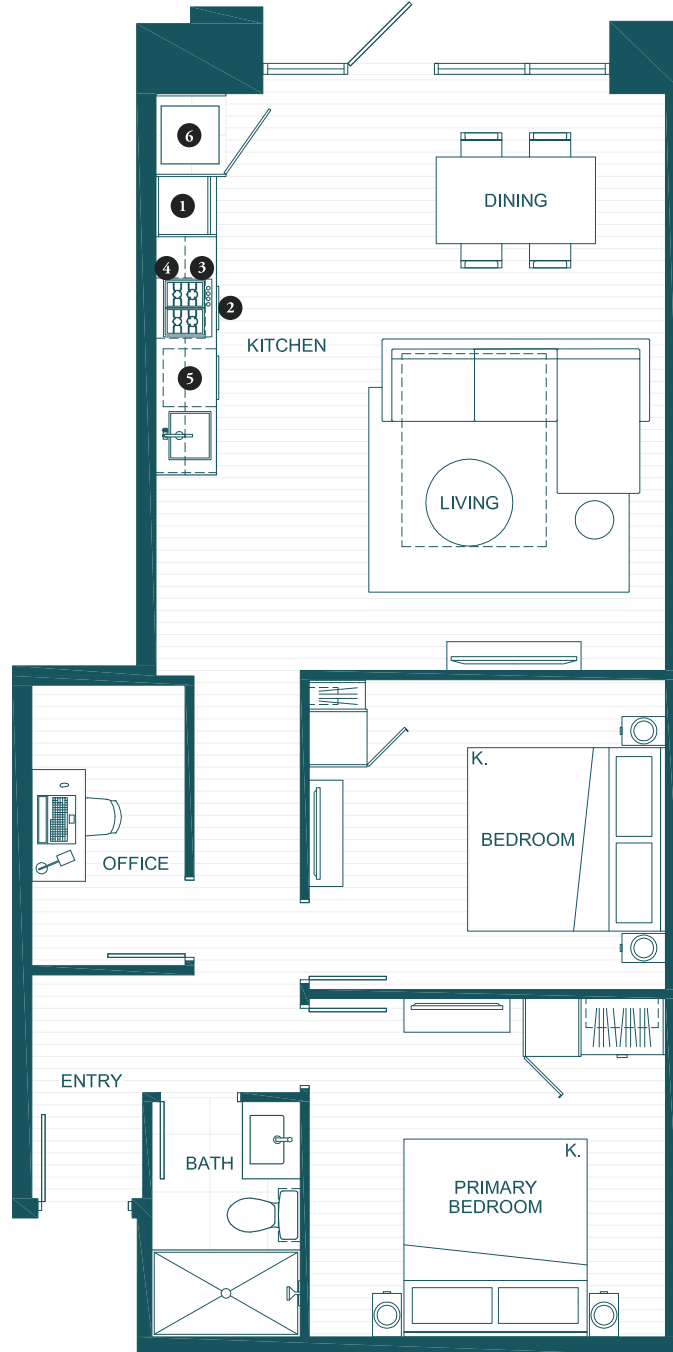
1. 24" Fulgor Milano Integrated Fridge
2. 24" Breda Induction Cooktop
3. 24" Convection Wall Oven
4. 24" Frigidaire Microwave Hoodfan Combo
5. 24" Blomberg Integrated Dishwasher
6. Blomberg Washer + Dryer

Two Bedroom Suite

STEVESTON
WATERFRONT HOTEL

TOTAL AREA

850 SQ FT



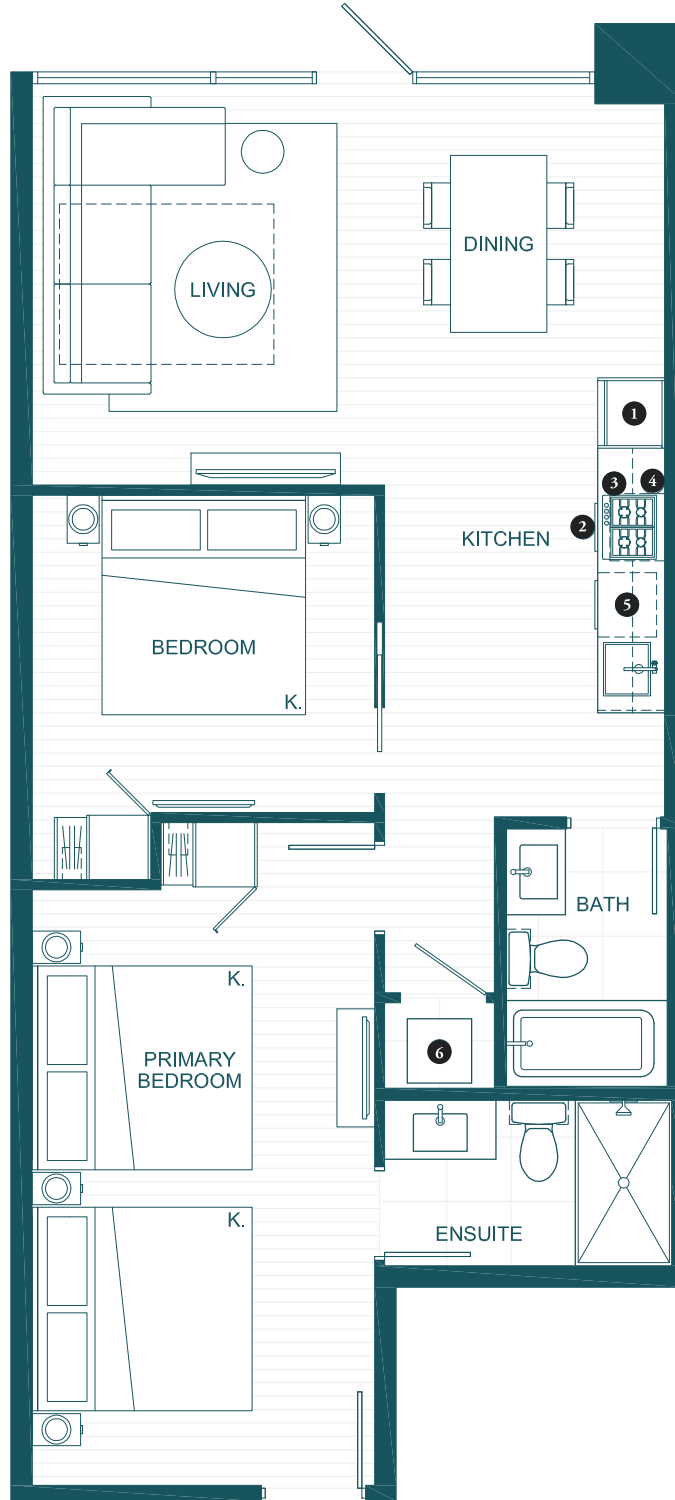
Feature List:

1. 24" Fulgor Milano Integrated Fridge
2. 24" Breda Induction Cooktop
3. 24" Convection Wall Oven
4. 24" Frigidaire Microwave Hoodfan Combo
5. 24" Blomberg Integrated Dishwasher
6. Blomberg Washer + Dryer

Two Bedroom Suite

STEVESTON
WATERFRONT HOTEL

TOTAL AREA
1,085 SQ FT



Feature List:

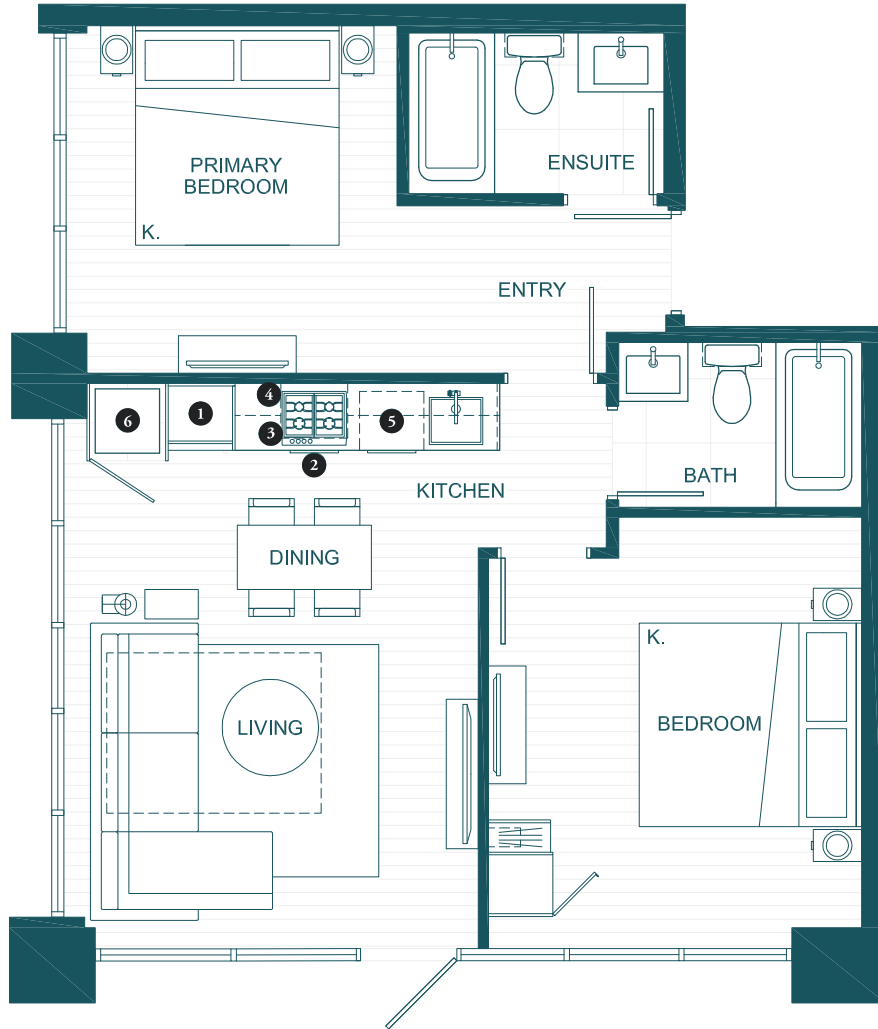
1. 24" Fulgor Milano Integrated Fridge
2. 24" Breda Induction Cooktop
3. 24" Convection Wall Oven
4. 24" Frigidalre Microwave Hoodfan Combo
5. 24" Blomberg Integrated Dishwasher
6. Blomberg Washer + Dryer

Two Bedroom Suite

STEVESTON
WATERFRONT HOTEL

TOTAL AREA

650 SQ FT



Feature List:

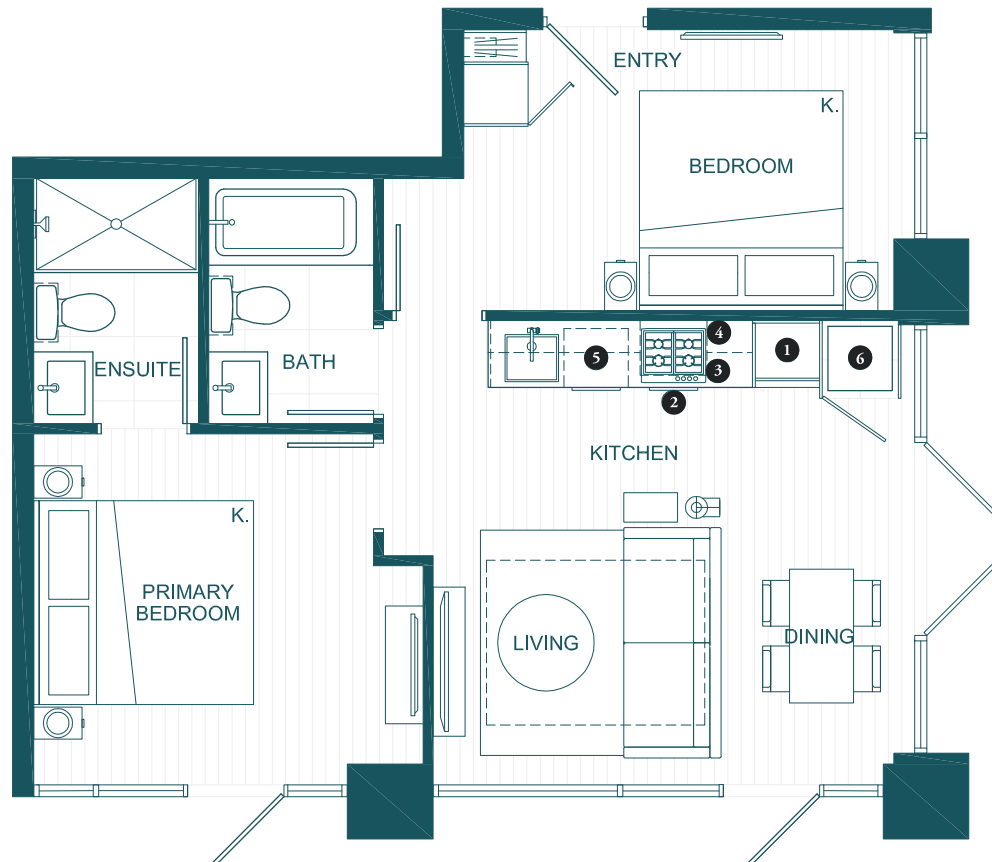
1. 24" Fulgor Milano Integrated Fridge
2. 24" Breda Induction Cooktop
3. 24" Convection Wall Oven
4. 24" Frigidaire Microwave Hoodfan Combo
5. 24" Blomberg Integrated Dishwasher
6. Blomberg Washer + Dryer

Two Bedroom Suite

STEVESTON
WATERFRONT HOTEL

TOTAL AREA

650 SQ FT



Feature List:

1. 24" Fulgor Milano Integrated Fridge
2. 24" Breda Induction Cooktop
3. 24" Convection Wall Oven
4. 24" Frigidaire Microwave Hoodfan Combo
5. 24" Blomberg Integrated Dishwasher
6. Blomberg Washer + Dryer